

Note:

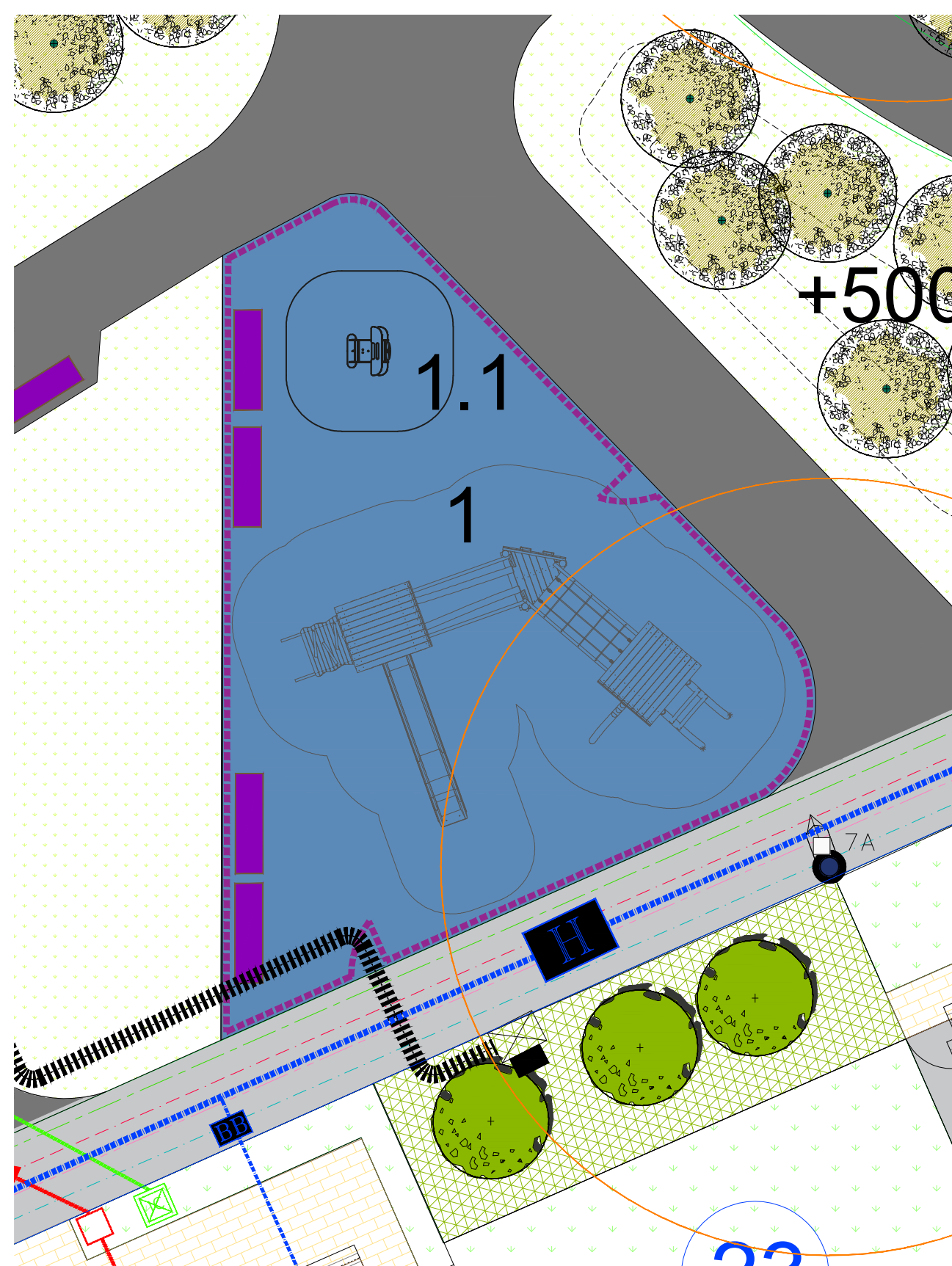
Legend

Playground and exercise equipment to include:

Area A

- 1 play unit Magnus, solo
- 1.1 Basis Spring Rocker
- 2 Calisthenics unit Midi 02
- 2.2 Calisthenic bars
- 3 fit Calisthenics
- 4 active-station pull down
- 5 active-station hip trainer
- 6 Calisthenics sit-up bench sloped

or similar and approved



1, 1.1

5 45 316 0630 0

paradiso play unit Magnus, solo

made in germany

Scope of delivery

- 1x post structure: robinia
- 3x platform structure: robinia
- 2x post roof: robinia
- 1x climbing board: robinia
- 1x sloped ladder: robinia
- 1x ramp: robinia
- 1x log ascent: robinia
- 1x balance log straight: robinia
- 1x net bridge impact: robinia, plastic-coated steel cable
- 2x parapet: robinia
- 4x walk-through protection: robinia
- 1x slide entry plate: robinia
- 4x set of grips: coated aluminium
- 1x squared timber: robinia
- fitting: stainless steel

Material	Robinia natural
Foundation level	FL 3
Minimum space	963x744x17 cm
Free falling height	145 cm
Impact protection net	51,0 m²
Foundations	16x CF
Assembly	2 persons/1 h
Largest section	Ø 14x479 cm

eibe Produktion • Vertrieb GmbH & Co. KG | Industriestraße 1 | D-87285 Röttingen | Germany | Fon +49 (0) 93 38 89-0 | Fax +49 (0) 93 38 89-199 | www.eibe.net

1.1 Basis Spring Rocker

5 67 256 0

Basis Spring rocker Rattle Box

made in germany

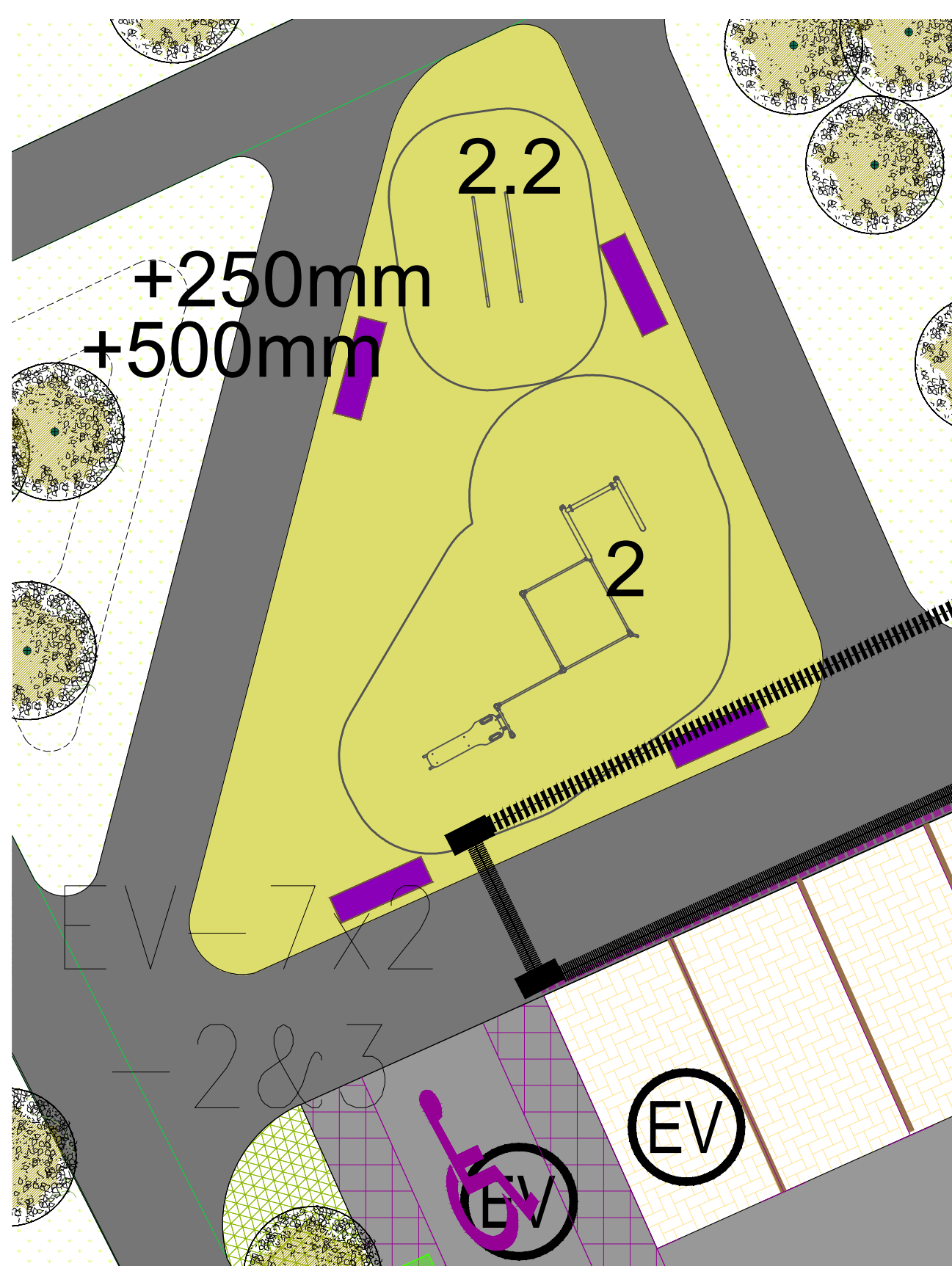
Scope of delivery

- 1x spring see-saw-body: HPL
- 1x spring: spring steel

Material	HPL
Foundation level	FL 3
Minimum space	300x298x220 cm
Free falling height	42 cm
Impact protection net	8,0 m²
Foundations	1x 963x280 + 1x CF
Assembly	1 person/1 h
Impact section	-

eibeplay Ltd, eibe House | Forsyth's Home Farm | A3 Bypass Road, Hartmore, Surrey | GU8 6 AD | UK | Fon +44 (0)14 83/813 834 | Fax +44 (0)14 83/813 851 | ebe@eibe.co.uk | www.eibe.co.uk

1 play unit Magnus, solo



2, 2.2

5 52 055 70

fit Calisthenics unit Midi 02

made in germany

Scope of delivery

- 2x post bend: powder steel
- 3x post: powder steel
- 1x crossbar: powder steel
- 1x rung ladder (6 rungs) with human flag pole: powder steel
- 2x horizontal bar 147 cm: stainless steel (V2A)
- 2x horizontal bar 127 cm: stainless steel (V2A)
- 2x horizontal bar 50 cm: stainless steel (V2A)
- 1x workout bench: HPL
- 1x climbing rope: PP

Material	stainless steel, powder steel, PP, HPL
Foundation level	FL 3
Minimum space	85x68x4390 cm
Free falling height	250 cm
Impact protection net	40,0 m²
Foundations	8x CF

eibe Produktion • Vertrieb GmbH & Co. KG | Industriestraße 1 | D-87285 Röttingen | Germany | Fon +49 (0) 93 38 89-0 | Fax +49 (0) 93 38 89-199 | www.eibe.net

2 Calisthenics unit Midi 02

5 52 059 0

fit Calisthenics bars

made in germany

Scope of delivery

- 1x bars: powder steel

Material	powder steel
Foundation level	FL 3
Minimum space	502x36x4392 cm
Free falling height	142 cm
Impact protection net	17,0 m²
Foundations	2x CF

eibeplay Ltd, eibe House | Forsyth's Home Farm | A3 Bypass Road, Hartmore, Surrey | GU8 6 AD | UK | Fon +44 (0)14 83/813 834 | Fax +44 (0)14 83/813 851 | ebe@eibe.co.uk | www.eibe.co.uk

2.2 Calisthenics bars

Project name: Ballindery Road, Mullingar	Project number: 18-069
Drawing name: Playground Equipment 1 of 3	Drawing number: PG-01-PP
Drawing scale @ A1: 1:100	Drawn by: kgf
Status: Planning	Checked by: ld
Contact details: Linda Doyle (Director) mobile: 087 267 4196 e-mail: linda@doyle-o'troigh.com Daire O'Troigh (Director) mobile: 086 300 3409 e-mail: daith@doyle-o'troigh.com	Office address: Pembroke House, 28-32 Upper Pembroke St, Dublin 2.